



SIGNAGE

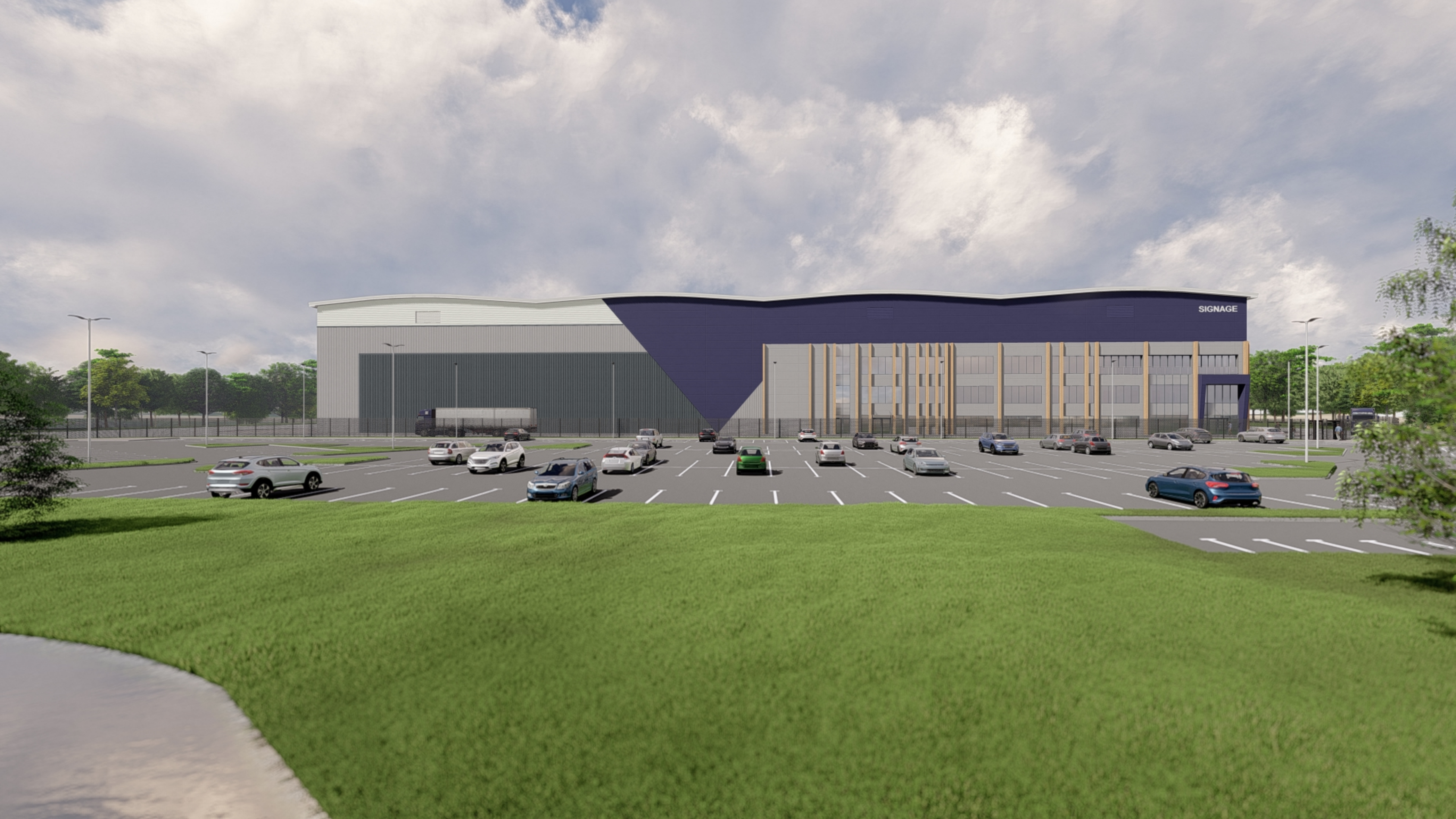
SIGNAGE





SIGNAGE

SIGNAGE



SIGNAGE





View A: Baseline view



View A: View of proposed development at year 1.



View A: View of proposed development at year 15.



Location of viewpoints



Client: Mulberry Commercial Developments (Midlands) Limited DC420 DIRFT, Crick Road, Rugby, Warwickshire, CV23 8YL	Figure Reference: BG21.387.15 BG21.387.15-BRGR-ZZ-ZZ-DR-L-00001	Designed: HCK	Drawn: HCK
	Figure Name: Photomontage A	Checked: LB	Approved: LB
Project Reference / Name: BG21.387 - Rockingham, Corby	View looking west from Kestrel Road towards the proposed development.	Date: 09.01.2023	Revision / Issue purpose: Revision P03 - Issued for Planning



Brindle & Green Limited
LANDSCAPE CONSULTANTS
www.brindlegreen.co.uk
TEL: 0800 222 9105



View B: Baseline view



View B: View of proposed development at year 1



View B: View of proposed development at year 15.



Location of viewpoints



Position of proposed development

Client: Mulberry Commercial Developments (Midlands) Limited DC420 DIRFT, Crick Road, Rugby, Warwickshire, CV23 8YL	Figure Reference: BG21.387.15 BG21.387.15-BRGR-ZZ-ZZ-DR-L-00002	Designed: HCK	Drawn: HCK
	Figure Name: Photomontage B	Checked: LB	Approved: LB
Project Reference / Name: BG21.387 - Rockingham, Corby	View looking north-west towards the proposed development from Hobby Drive.	Date: 09.01.2023	Revision / Issue purpose: Revision P03 - Issued for Planning



Brindle & Green Limited
LANDSCAPE CONSULTANTS
www.brindlegreen.co.uk
TEL: 0800 222 9105



View C: Baseline view



View C: View of proposed development at year 1.



View C: View of proposed development at year 15.



Location of viewpoints



Client: Mulberry Commercial Developments (Midlands) Limited DC420 DIRFT, Crick Road, Rugby, Warwickshire, CV23 8YL	Figure Reference: BG21.387.15 BG21.387.15-BRGR-ZZ-ZZ-DR-L-00003	Designed: HCK	Drawn: HCK
	Figure Name: Photomontage C	Checked: LB	Approved: LB
Project Reference / Name: BG21.387 - Rockingham, Corby	View looking north-east towards the site from Gretton Road	Date: 09.01.2023	Revision / Issue purpose: Revision P03 - Issued for Planning



Brindle & Green Limited
LANDSCAPE CONSULTANTS
www.brindlegreen.co.uk
TEL: 0800 222 9105